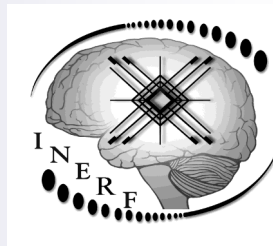


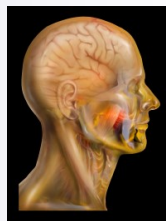
Fukushima Skull Base Surgery
Experience...Innovation...Teaching

The 44th Advanced Skull Base Microanatomy and Hands-On Dissection Workshop

Presented by
INTERNATIONAL NEUROSURGERY EDUCATION & RESEARCH FOUNDATION



Location:
Johnson & Johnson Institute
4600 Riverside Dr
Palm Beach Gardens FL 33410



[International Neurosurgery Education & Research Foundation](http://www.inerf.org)

4030 Wake Forest Road, Suite 115
Raleigh, NC 27609 USA
Telephone: 919-239-0264
Facsimile: 919-239-0266
inerf@carolinaneuroscience.com
www.inerf.org



COURSE CO-DIRECTORS



Takanori Fukushima, M.D.
Professor of Neurosurgery
Duke University Medical Center
and
Director of Skull Base Surgery
Raleigh Neurosurgical Clinic
Raleigh, North Carolina, USA

Ali Zomorodi , M.D.
Associate Prof of Neurosurgery
Duke University Medical Center
Durham NC

Luc DeWaele M.D.
Neurosurgeon Retired
AZ Sint-Lucas Hospital Gent
Ghent, Belgium

Luciano Mastronardi, M.D.
Chief of Neurosurgery
San Filippo Neri
Rome, Italy

Faculty

Udom Bawornvaraporn, M.D.
Duke University Fellow
Duke University Medical Center
Durham NC

Satoshi Kawajiri, M.D.
Duke University Fellow
Duke University Medical Center
Durham NC

Tadashi Sugimoto M.D.
Duke University Fellow
Duke University Medical Center
Durham NC

Course Manager

Lori Radcliffe
Administrator
lori@carolinaneuroscience.com

Course Schedule

Wednesday, April 29, 2020

Arrival and Check in at hotel

7:30-9:30 PM Casual Welcome Reception at Hotel

Thursday, April 30, 2020

7:00AM Breakfast at the hotel

7:35AM Walk from hotel to facility

7:45AM Participant Sign-In at the Laboratory • Vendor Exhibits

8:00 AM **Lectures**

Variations of Orbitozygomatic and Transzygomatic Approach (T-Bone Osteotomy and Envelope Method), STA Enhanced Galeofascial Anterior Flap (Fukushima/Bawornvaraporn)
AITF Exposure and Microanatomy (Bawornvaraporn)

8:30 AM **Hands-On Dissection**

Rt Preauricular Frontotemporal 3-Layer Elevation, STA attached galeofascial flap, Transzygomatic Approach with Envelope Method, Orbitocranial one piece craniotomy, Anterior Clinoidectomy, Extradural AITF (Zomorodi/Bawornvaraporn)

12:00 PM Lunch • Vendor Exhibits

1:00 PM **Lectures**

Anatomy of the Orbit (Bawornvaraporn)
Cavernous Sinus Dissection and EC-M2 Bypass (Zomorodi)

1:30 PM **Hands-On Dissection**

Cavernous Sinus Dissection and EC-M2 High Flow Bypass (Zomorodi)

4:30 PM Lab Closes for Clean Up-Walk back to hotel

6:15 PM Meet in hotel lobby ; bus arrival

6:00 PM Course Dinner– Yard House– Casual

Friday, May 2, 2020

7:00 AM Breakfast at the hotel

7:35 AM Walk from hotel to facility • Vendor Exhibits

8:00 AM **Lectures**

Parabrainsstem Tumors and Combined Petrosal Approach (Fukushima)
Video Presentation: Temporal Bone Anatomy and How to drill the Mastoid (Bawornvaraporn)

8:45 AM **Hands-On Dissection**

Left side: 3 Layer Elevation; STA Enhanced Galeofascial Pericranial Posterolateral flap, Mastoidectomy & Petrosal Craniotomy (Zomorodi/Fukushima)

12:00 PM Lunch • Vendor Exhibits

1:00 PM **Lectures**

Micro-Anatomy & Dissection of Middle Fossa and Anterior Petrosectomy (Zomorodi)
EC-P2 Bypass (Zomorodi)

1:30 PM **Hands-On Dissection Workshop**

Middle Fossa Dissection, Tentorium Resection and Combined Petrosal Dissection Intradural Dissection (Zomorodi)
EC-P2 High Flow Bypass (Zomorodi)

4:30 PM Lab Closes for Clean Up-Walk back to the hotel

6:00 PM Meet in the hotel lobby; bus arrival

6:30PM Official Course Dinner

Saturday, May 2, 2020

7:00 AM Breakfast at the hotel

7:35 AM Walk from hotel to facility • Vendor Exhibits

8:00 AM **Lectures**

Evolution of ELITE Approach and Clinical Cases (Bawornvaraporn)
Micro-Anatomy of Transcondylar Exposure (DeWaele)

8:30 AM **Hands-On Dissection**

Far Lateral Transcondylar (ELITE) Dissection (Zomorodi, DeWaele)

12:00 PM Lunch

1:00 PM **Lectures**

Anatomy of the Jugular Bulb and Surgery of Jugular Foramen Tumors (Zomorodi)
Surgery of Acoustic Neuromas (Mastronardi)

1:30 PM **Hands-On Dissection**

High Cervical Exposure and Transmastoid Transsigmoid Transjugular Dissection (Zomorodi/Mastronardi)

4:30 PM Lab Closes for Clean-up– Walk back to hotel

OFFICIAL COURSE HOTEL

Hampton Inn, Palm Beach Gardens
RCA Blvd,
Palm Beach Gardens, FL

Restaurants for Course Dinners

Yard House
Palm Beach - Downtown at the Gardens
11701 Lake Victoria Gardens
Palm Beach Gardens, FL 33410
(561) 691-6901

TBD

Course Venue

Johnson & Johnson Institute
4600 Riverside Dr
Palm Beach Gardens FL 33410

INERF thanks our supporting vendors:

American Surgical Company
Integra NeuroSciences
Mizuho America, Inc.
TeDan Surgical Innovations
Leica Microsystems

*A portion of the cost of this program is borne by donations of supporting vendors.
Please take time to visit their technical displays.*